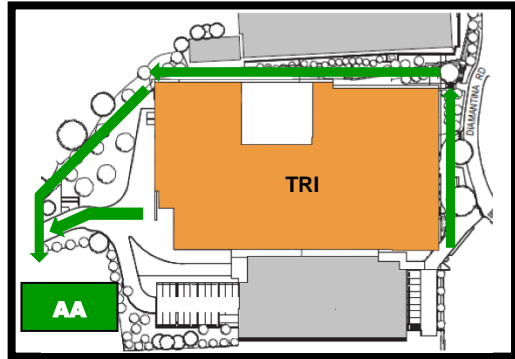


# EVACUATION SIGN



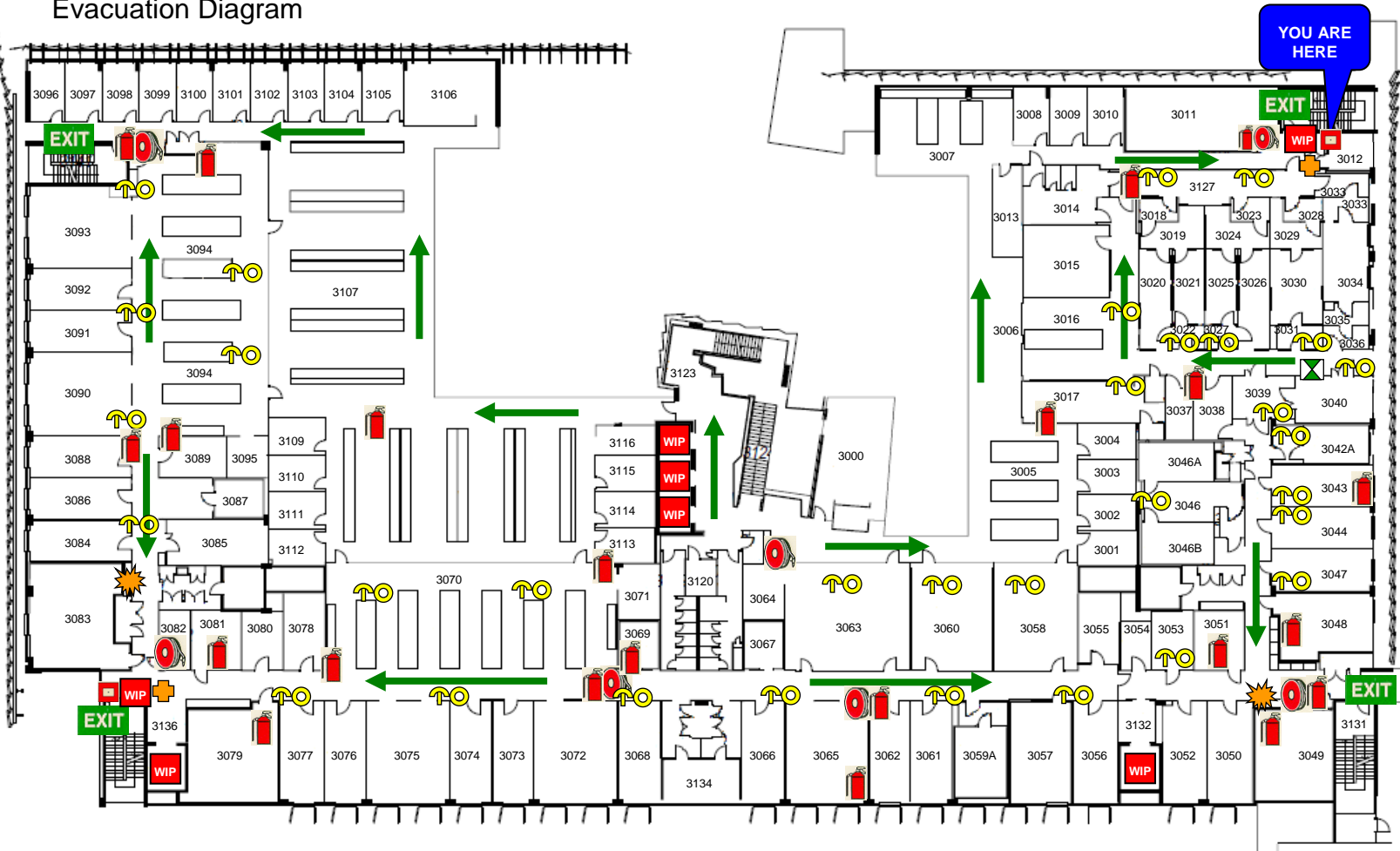
## Floor 3

Evacuation Diagram



### IN CASE OF FIRE

- R**EMOVE PEOPLE from immediate danger
- A**LERT THE FIRE SERVICE
  - dial 0 then call 000
  - alert security x37733 (34437733)
- C**ONFINE FIRE & SMOKE close doors and windows (if safe to do so)
- E**VACUATE to the ASSEMBLY AREA



|                      |  |
|----------------------|--|
| EXIT                 |  |
| ASSEMBLY AREA        |  |
| PATH OF EXIT         |  |
| WIP PHONES           |  |
| FIRE HOSE REEL       |  |
| EXTINGUISHER         |  |
| MANUAL CALL POINT    |  |
| FIRE INDICATOR PANEL |  |
| BREATHING APPARATUS  |  |

|                  |  |
|------------------|--|
| EYE WASH STATION |  |
| SAFETY SHOWER    |  |
| FIRST AID        |  |
| DEFIBRILLATOR    |  |
| SPILL KIT        |  |

Mobility impaired persons should evacuate immediately on hearing the fire alarm assisted by a nominated person.

**000**  
EMERGENCY

In an emergency dial 0 then call 000