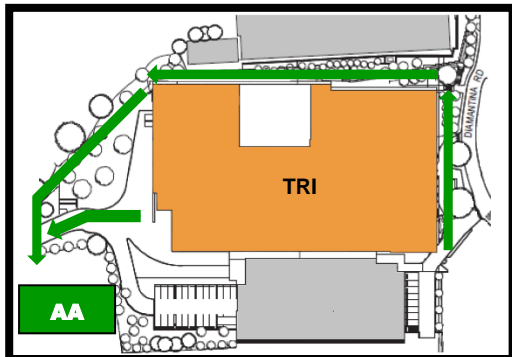
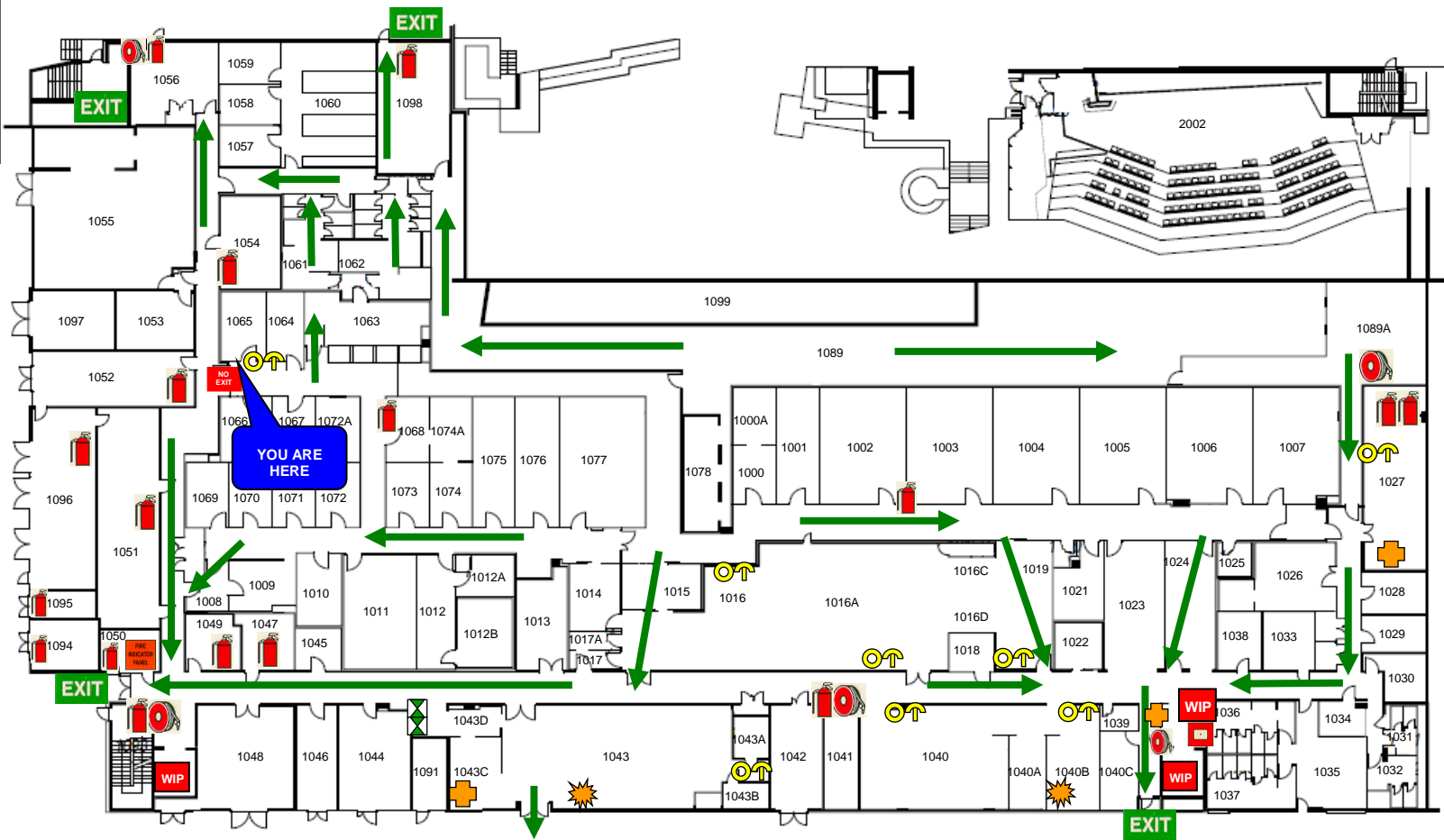


# EVACUATION SIGN



Evacuation Diagram

## Floor 1



### IN CASE OF FIRE

- R**EMOVE PEOPLE from immediate danger
- A**LERT THE FIRE SERVICE
  - dial 0 then call 000
  - alert security x37733 (34437733)
- C**ONFINE FIRE & SMOKE close doors and windows (if safe to do so)
- E**VACUATE to the ASSEMBLY AREA

EXIT	
ASSEMBLY AREA	
PATH OF EXIT	
WIP PHONES	
FIRE HOSE REEL	
EXTINGUISHER	
MANUAL CALL POINT	
FIRE INDICATOR PANEL	
BREATHING APPARATUS	

EYE WASH STATION	
SAFETY SHOWER	
FIRST AID	
DEFIBRILLATOR	
SPILL KIT	

**Mobility impaired persons should evacuate immediately on hearing the fire alarm assisted by a nominated person.**

**000 EMERGENCY**

**In an emergency dial 0 then call 000**