

# INTRODUCTION TO PROTEOMICS

This 5 day training course is designed to provide users a basic understanding of proteomics. Users will gain hands on experience with proteomics instruments and software.

The Practical component includes sample preparation for whole cell proteomics or co-immunoprecipitation to study protein-protein interactions, mass spectrometry sample analysis, and data analysis.

Register via [Proteomics PPMS](#) or contact Proteomic Core <proteomiccore@tri.edu.au>

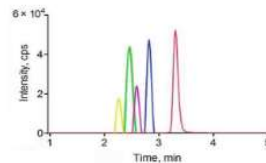
Months	Days	Details		Requirements
March, May, July, September and November	1	Theoretical	Intro: <b>1hr</b>	Free
	2	Practical	Lab day1: <b>Half Day</b>	Registration Required.
	3		Lab day2: <b>Half Day</b>	Up to 6 people. First
	4		Data analysis day 1: <b>1hr</b>	sample is free, \$70 per
	5		Data analysis day 2: <b>1hr</b>	extra sample



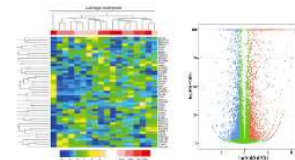
Experiments



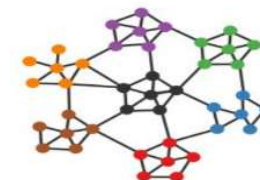
Sample Preparation



Mass Spectrometry



Data Analysis



Protein Biology

Month	Date	Days		Details	Start	Location	Requirements
March	15/03/2021	1	Theoretical	Intro: <b>1hr</b>	3pm	Office 5000	
	16/03/2021	2	Practical	Lab day1: <b>Half Day</b>	10am (IP) or 1pm (WCL)	Lab 5020	Registration Required. Up to 3 people per IP or WCL lab session. First sample is free, \$70 per extra sample
	17/03/2021	3		Lab day2: <b>Half Day</b>	10am	Lab 5043	
	23/03/2021	4		Data analysis day 1: <b>1hr</b>	1pm	Office 5000	
	25/03/2021	5		Data analysis day 2: <b>1hr</b>	1pm	Office 5000	
May	17/05/2021	1	Theoretical	Intro: <b>1hr</b>	3pm	Office 5000	
	18/05/2021	2	Practical	Lab day1: <b>Half Day</b>	10am (IP) or 1pm (WCL)	Lab 5020	Registration Required. Up to 3 people per IP or WCL lab session. First sample is free, \$70 per extra sample
	19/05/2021	3		Lab day2: <b>Half Day</b>	10am	Lab 5043	
	25/05/2021	4		Data analysis day 1: <b>1hr</b>	1pm	Office 5000	
	27/05/2021	5		Data analysis day 2: <b>1hr</b>	1pm	Office 5000	
July	19/07/2021	1	Theoretical	Intro: <b>1hr</b>	3pm	Office 5000	
	20/07/2021	2	Practical	Lab day1: <b>Half Day</b>	10am (IP) or 1pm (WCL)	Lab 5020	Registration Required. Up to 3 people per IP or WCL lab session. First sample is free, \$70 per extra sample
	21/07/2021	3		Lab day2: <b>Half Day</b>	10am	Lab 5043	
	27/07/2021	4		Data analysis day 1: <b>1hr</b>	1pm	Office 5000	
	29/07/2021	5		Data analysis day 2: <b>1hr</b>	1pm	Office 5000	
September	20/09/2021	1	Theoretical	Intro: <b>1hr</b>	3pm	Office 5000	
	21/09/2021	2	Practical	Lab day1: <b>Half Day</b>	10am (IP) or 1pm (WCL)	Lab 5020	Registration Required. Up to 3 people per IP or WCL lab session. First sample is free, \$70 per extra sample
	22/09/2021	3		Lab day2: <b>Half Day</b>	10am	Lab 5043	
	28/09/2021	4		Data analysis day 1: <b>1hr</b>	1pm	Office 5000	
	30/09/2021	5		Data analysis day 2: <b>1hr</b>	1pm	Office 5000	
November	15/11/2021	1	Theoretical	Intro: <b>1hr</b>	3pm	Office 5000	
	16/11/2021	2	Practical	Lab day1: <b>Half Day</b>	10am (IP) or 1pm (WCL)	Lab 5020	Registration Required. Up to 3 people per IP or WCL lab session. First sample is free, \$70 per extra sample
	17/11/2021	3		Lab day2: <b>Half Day</b>	10am	Lab 5043	
	23/11/2021	4		Data analysis day 1: <b>1hr</b>	1pm	Office 5000	
	25/11/2021	5		Data analysis day 2: <b>1hr</b>	1pm	Office 5000	