

Primary Care Education Program

www.kidney.org.au/health-professionals

Kidney Health Australia

We are a not-for-profit organisation dedicated to helping people with kidney disease, with a view to improving their health outcomes and quality of life, and that of their families and carers.

Primary Care Education Program

AIM: To support best practice detection and management of kidney disease and related conditions by providing comprehensive clinical education and resources for health professionals working in primary care.

- **Accredited** education for health professionals on chronic kidney disease and related conditions
- partnering with organisations to hold interactive workshops for
 - GPs
 - Nurses
 - Other health professionals

FREE online learning at thinkGP.com.au/KHA

Order your handbook '**CKD Management in General Practice**'

Download the handbook or the app '**CKD-Go!**' – rated 4/4 stars by Medical Observer, 2016

Contact

PrimaryCare@kidney.org.au

P | 08 8334 7512

www.kidney.org.au

www.thinkGP.com.au/KHA

Kidney disease education is important

1 in 3 Australians
is at increased risk of kidney disease



- 1 in 10 Australian adults has CKD
- Diabetes is the leading cause of kidney failure
- You can lose up to 90% of your kidney function before experiencing any symptoms
- Individuals with CKD are at a 2-3-fold greater risk of cardiac death than individuals without CKD
- The usual setting for initial assessment and diagnosis of CKD is in general practice.

CKD risk factors

- Diabetes
- Hypertension
- Established cardiovascular disease
- Family history of kidney failure
- Obesity (BMI ≥ 30 kg/m²)
- Smoker
- Aboriginal or Torres Strait Islander origin ≥ 30 years of age
- Age over 60 years
- History of acute kidney injury

Primary Care Education

Primary care education is an interactive learning experience facilitated by a local Nephrologist or Renal Nurse selected by KHA.

Primary care education is available for:

- **Interactive face-to-face workshops**
- **Active Learning Modules**
- **Quality Improvement Activities**
- **Online learning** www.thinkGP.com.au/KHA
- **Conferences**
- **Interactive web-based sessions**

Education modules are accredited for Continuing Professional Development with: RACGP, ACRRM & APNA

Primary Care Resources

CKD Management in General Practice handbook, 3rd edition

CKD-Go! app

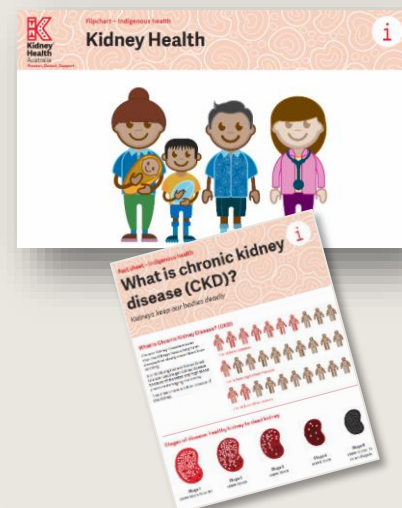
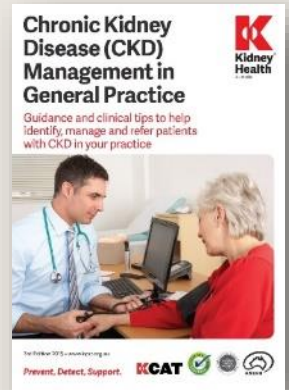
CKD posters

My Kidneys My Health patient handbook and app






Indigenous health worker resources - *Clinic room education flipchart, & patient handouts*

Workshop resources Packs

Order your resources from primarycare@kidney.org.au or visit www.kidney.org.au



2018 Primary Care Education

Topics	GPs 	Nurses 	Indigenous Health Workers 	Other health professionals 	Online 
Core CKD					
1) Detecting & Managing Chronic Kidney Disease	✓	✓	✓	✓	✓
2) Managing stage 3 Chronic Kidney Disease: Disease progression & complications	✓	✓*			
3) CKD issues for General Practitioners: 4 common cases	✓	✓*			✓
4) CKD in Indigenous Australians	✓	✓*			
5) Understanding CKD: Aboriginal & Torres Strait Islander Health Services		✓	✓	✓	
CKD and chronic conditions					
6) Connecting CKD: managing resistant hypertension	✓	✓*			
7) Connecting CKD: the link with cardiovascular disease	✓	✓	✓	✓	✓
8) Connecting CKD: the link with Diabetes	✓	✓	✓	✓	✓
CKD extended learning					
9) Acute Kidney Injury	✓	✓*			
10) Impacts of CKD in older people	✓	✓	✓	✓	
11) eGFR and drug dosing in CKD	✓	✓*		✓	
12) Managing stage 4 & 5 CKD: working with the nephrologist	✓	✓*			
13) Decision support and symptom control in ESKD	✓	✓*			
14) **NEW** Polycystic Kidney Disease	✓	✓*			

*Indicates learning outcomes are pitched at a GP level but would generally be suitable for any health professional who is involved in CKD management.

Contact our team

PrimaryCare@kidney.org.au
P | 08 8334 7512

www.kidney.org.au

Online Learning

To access our free online learning modules, please visit
www.thinkGP.com.au/KHA

KHA's Primary Care Education Program is proudly associated with the following organisations



RACGP

QI&CPD
2017-19 Accredited Activity
Provider



“Evidence suggests that CKD is not being adequately detected or appropriately managed in primary care”

Statistics referenced from 'CKD Management in General Practice' 3rd edition, 2015, Melbourne, Kidney Health Australia

V0118

Thanks to our supporters



Boehringer
Ingelheim

Lilly